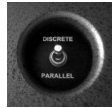


Installation Series

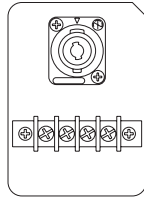
Subwoofers



IS1215

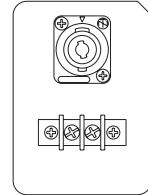


IS1215 Rear Panel

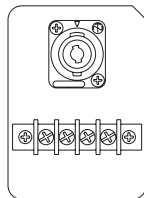


IS1118

IS1118 Rear Panel

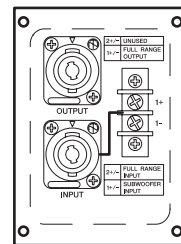


IS1218



IS1112

IS1112 Rear Panel



IS1215 & IS1218 & IS1118

High-power subwoofer systems with single or dual woofers.

- Sound and phase characteristics matched with all other Installation Series models for optimum performance in any combination.
- Dual 15" woofers in the IS1215.
- Single/dual 18" woofers in the IS1118/IS1218
- Dual woofers can be switched for discrete drive (IS1215 and IS1218).
- Rugged 19-mm thick, 13-ply Finland birch enclosure can be painted to match any interior.
- Twelve 10mm-screw suspension points (M10) provided for flexible rigging.
- Durable black or white finish.
- Optional matching array frame available (for IS1118 and 1218 only).
- Parallel-wired Neutrik NL4 and barrier strip connectors.
- Downloadable Y-53 (Yamaha Sound System Simulator) software offers precise performance simulation for Installation Series speakers.

IS1112

Uncompromising IS series performance ideally matched to smaller full-range speakers.

- The perfect way to achieve naturally extended low-end response in systems that use smaller IS series full-range models for primary delivery.
- Significantly smaller than competing 12" subwoofers, while delivering outstanding sonic performance and reliability.
- 2800 watt peak input capacity with high 127 dB sound pressure level output.
- Large 4" voice coil for superior reliability, power handling, and response.
- Direct connection to full-range units without the need for special speaker cables.
- Flexible installation and handling: 12 x M10 rigging points, two handles, and pole socket.
- Vibration damping rubber feet supplied.
- Durable black or white exterior finish.

Installation Series

GENERAL SPECIFICATIONS

Model		IS1215(W)	IS1218(W)	IS1118(W)	IS1112(W)
Nominal impedance	Parallel	4Ω		-	-
	Discrete	8Ω x2		8Ω	8Ω
Power rating ^{*1}	Parallel	NOISE	1400W	-	-
		PGM	2800W	-	-
		MAX	5600W	-	-
	Discrete	NOISE	700W x2	700W	700W
		PGM	1400W x2	1400W	1400W
		MAX	2800W x2	2800W	2800W
Sensitivity (1W, 1m)	Parallel	97dB SPL	99dB SPL	-	-
	Discrete	100dB SPL	102dB SPL	96dB SPL	93dB SPL
Continuous SPL (calculated)	Parallel/Discrete	128dB SPL	130dB SPL	124dB SPL	121dB SPL
Peak SPL (calculated)	Parallel/Discrete	134dB SPL	136dB SPL	130dB SPL	127dB SPL
Components		2x 15" woofer, 4" voice coil	2x 18" woofer, 4" voice coil	18" woofer, 4" voice coil	12" woofer, 4" voice coil
Frequency range (-10dB) ^{*2}		40Hz-2.5kHz	33Hz-3kHz	33Hz-3kHz	45Hz-2kHz
Connectors		1x NL4 and barrier strip, wired in parallel			
Shape		Rectangular			
Dimensions (W x H x D)		448 x 883 x 610 (17.6" x 34.8" x 24.0")	610 x 1006 x 709 (24.0" x 39.6" x 27.9")	610 x 591 x 709 (24.0" x 23.3" x 27.9")	378 x 394 x 454 (14.9" x 15.5" x 17.9")
Weight		63.0kg (138.9lbs)	76.0kg (167.6lbs)	44.0kg (97.0lbs)	24.0kg (53.0lbs)
Flying hardware		12x M10			
Optional accessories		-	HAF3-S18(W)	HAF3-S18(W)	-

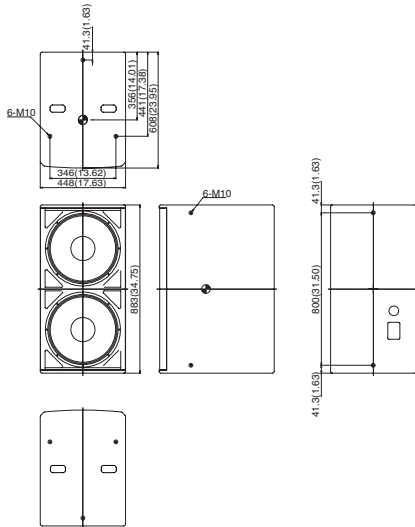
*1 AES

*2 Yamaha recommended DSP configuration, full-space

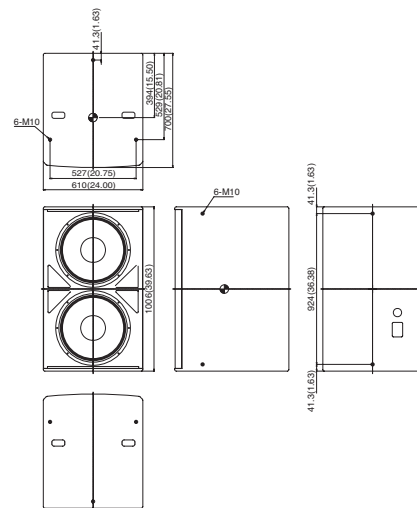
DIMENSIONS

unit : mm(inch)

IS1215(W)

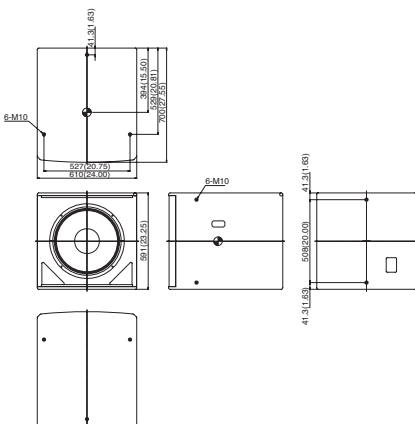


IS1218(W)



● Center of balance

IS1118(W)



IS1112(W)

