

PDR-2160

High Performance
Standalone 16-ch DVR



PDR-2160

The new PDR-2160 is a high performance standalone 16 Channel Digital Video Recorder (DVR) designed to perform multiple features such as recording, playback and remote surveillance simultaneously. Offering unbeatable costs per channel, the network ready PDR-2160 is compact and simple to use. It can be operated through the on-screen menu, front panel, keyboard controller, and fully operational IR remote control. The unique portable USB drive and the built-in CD-RW further enhances the DVR, enabling the user download recorded images and upgrade firmware.

Featuring real time display at 480/400 frames per second, the PDR-2160 delivers incredible performance and functionality. There is the option to have two internal SATA II Hard Drives, one of which is hot swappable, allowing it to be easily changed to increase storage without stopping live monitoring or recording. There are also two external SATA II ports, which are capable of being used in conjunction with SATA II RAID, providing a maximum storage capacity of 4TB.

Providing network connectivity via Internet Explorer or the supplied propriety software, management and security staff can view all live and recorded images from a remote location. Also, the additional benefit of the jog and shuttle feature provides a quick and intuitive way to search the recordings.

Designed to meet the latest security requirements, features such as the extra watchdog timer protection, two level user authentication and spot camera switching display provides piece of mind for the user.

With individual camera setup, users can define features, such as zoneable motion detection, scheduled recording, external alarm control and user authentication. Complete with advanced image compression technology ensuring high quality resolution, the new standalone digital video recorder provides a versatile solution.

- Built-in CD/RW for backup
- ISO-9660 compatible CD, with plug and play
- HTTP web-based interface including remote PTZ, playback, and live monitoring
- 16-channel video inputs up to 480(NTSC) / 400(PAL) frames per second
- Up to 120 CIF playback speed
- 7 days, 24hours grid scheduling for alarm / motion, continuous, and stop recording.
- 4 matrix spot outputs (PDR-2160A) with OSD support
- 2 main outputs with built-in multiple features for split monitoring
- 1-channel audio input and output for recording
- Simultaneous recording, playback, CD/RW backup, network, and live monitoring
- Hot swappable SATA II HDD and one internal SATA II HDD
- 2 external SATA II ports for external SATA II RAID up to 4TB recording capability
- 16x12 motion detection grids
- Portable USB 2.0 flash disk and external USB 2.0 CD/RW backup
- Easy-to-use jog, shuttle, and 3D joystick controlling setup and playback menus



USB 2.0 Port



CD-RW

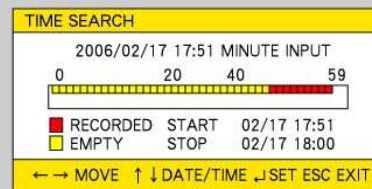


SATA II Port x 2



Hot Swappable
SATA II HDD

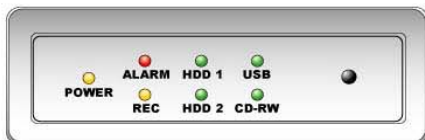
Time Search



System LED Status Panel

System LEDs are meaningful while operating PDR-2160.

The status of each LED is described as in the following table:



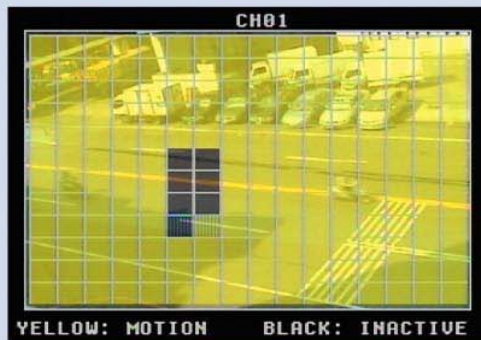
| LED | Description | Color |
|-------|---|------------------|
| REC | Recording indicator | Yellow |
| HDD 1 | Master HDD recording indicator | Green (blinking) |
| HDD 2 | Slave HDD recording indicator | Green (blinking) |
| ALARM | External alarm switches indicators when motioned or alarmed | Red |
| USB | USB portable disk connected indicator | Green (blinking) |
| CDRW | CD writing indicator | Green (blinking) |
| POWER | PDR-2160 power on/off indicator | Yellow |



Surveillance Mode - Screen Layout

1. Date
2. Day of the week
3. Time
4. HDD recording percentage(%) and master(M) / slave(S) HDD indicator
5. Recording symbol - circle in red
6. Alarm activation indicator - bell in yellow
7. Yellow camera ID - controllable PTZ device
8. Motion detection indicator - little man in yellow
9. Remote Controller Status

Motion Decetion



Internet Browser



Daisy Connection of multiple PDR-2160 and Keyboard

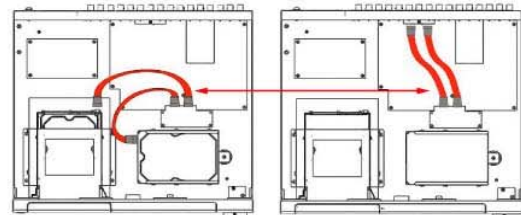
To connect PIH-931 keyboard and multiple PDR-2160 DVRs, connect RJ-45 from PIH-931 keyboard to PDR-2160's RJ-45 keyboard input. PDR-2160 DVRs are connected in daisy chain from RJ-45's keyboard output to the next PDR-2160's input. There are up to 255 PDR-2160 can be connected and addressed.



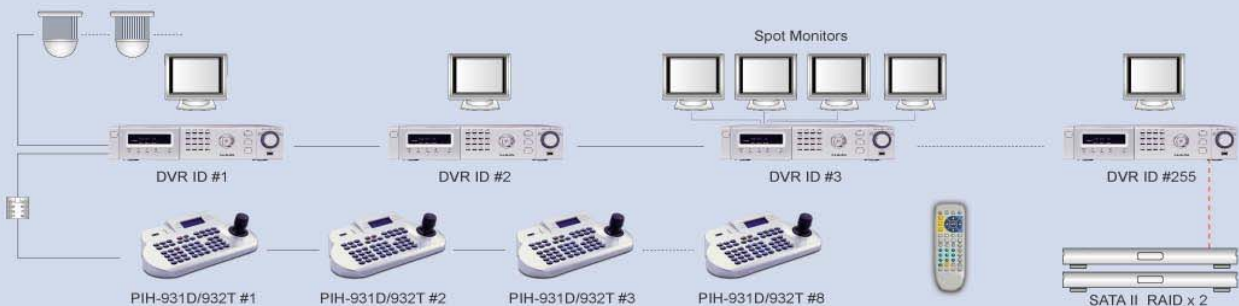
PIH-931D/932T Multi-function keyboard controller

1. LCD Display (20 characteristic x 4 lines)
2. Capable to control PTZ, DVR, Matrix and monitor
3. 3D Joystick (Pan/Tilt/Zoom) / 2D Joystick (Pan/Tilt)
4. Data Communication: RS-485 Standard
5. Easy install and setup by RJ-45 connector
6. Expandable up to 8 keyboard controllers

Connect to External SATA RAID



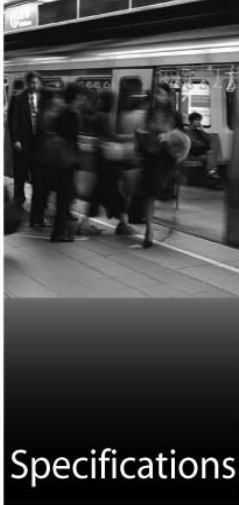
System Architecture



120 GB HARD DISK RECORDING TABLE

| Resolution | FPS | Recording Quality | | | |
|------------|-----|-------------------|----------|----------|----------|
| | | PAL | | | |
| | | Very high | High | Normal | Low |
| 720 x288 | 50 | 17 hrs | 21 hrs | 41 hrs | 64 hrs |
| | 25 | 35 hrs | 41 hrs | 82 hrs | 127 hrs |
| | 12 | 73 hrs | 86 hrs | 171 hrs | 265 hrs |
| | 10 | 87 hrs | 103 hrs | 206 hrs | 318 hrs |
| | 5 | 175 hrs | 206 hrs | 411 hrs | 636 hrs |
| | 3 | 291 hrs | 343 hrs | 685 hrs | 1059 hrs |
| | 2 | 437 hrs | 514 hrs | 1028 hrs | 1589 hrs |
| | 1 | 874 hrs | 1028 hrs | 2056 hrs | 3178 hrs |

| Resolution | FPS | Recording Quality | | | |
|------------|-----|-------------------|----------|----------|----------|
| | | NTSC | | | |
| | | Very high | High | Normal | Low |
| 720 x240 | 60 | 15 hrs | 17 hrs | 34 hrs | 53 hrs |
| | 30 | 29 hrs | 34 hrs | 69 hrs | 106 hrs |
| | 20 | 44 hrs | 51 hrs | 106 hrs | 159 hrs |
| | 12 | 73 hrs | 86 hrs | 171 hrs | 265 hrs |
| | 5 | 175 hrs | 206 hrs | 411 hrs | 636 hrs |
| | 3 | 291 hrs | 343 hrs | 685 hrs | 1059 hrs |
| | 2 | 434 hrs | 514 hrs | 1028 hrs | 1589 hrs |
| | 1 | 874 hrs | 1028 hrs | 2056 hrs | 3178 hrs |



High Performance Standalone 16-ch DVR



Specifications

| | PDR-2160A (Advanced) | PDR-2160S (Standard) | PDR-3160 |
|----------------------|--|----------------------|---------------------------|
| Recording | Hot swappable SATA (II) HDD x 1, Fix SATA (II) HDD x 1 | | Hot swappable IDE HDD x 2 |
| External Storage | Up to 2 external SATA (II) RAID with total 8 HDDs, 4 TB space (optional) | | Nil |
| Record Type | External DIO triggering recording / motion detection / schedule / manual | | |
| Speed | PAL: 50 Fields/Sec / 100 CIF/Sec NTSC: 60 Fields/Sec / 120 CIF/Sec | | |
| Resolution | 720 x 240 (Fields) / 320 x 240 (CIF) | | |
| Scheduling | 7x24 grid array adjustable for motion / record / stop recording | | |
| Archiving | USB 2.0 Flash Disk / USB 2.0 External CD-RW | | |
| CD/RW | Built-in: 52X(W) 32X(RW) 52X (ROM) | | USB 2.0 External |
| CD Format | ISO-9660 compatible, plug-and-play | | |
| Playback | Normal Record / Timer Search / Alarm / Motion Detection Triggering / HDD Playback | | |
| Speed | FR: 2x, 4x, 8x, 16x / FF: 2x, 4x, 8x, 16x, 32x, 64x | | |
| Compression | Modified M-JPEG | | |
| Video Input | 16-channel BNC Inputs (1Vp-p, 75Ω Terminal) | | |
| Camera Title | Anti-flickering 8 characters OSD | | |
| Looping | 16-channel BNC (1Vp-p, 75Ω Terminal) | Nil | Nil |
| Live | 400 FPS (PAL)/480 FPS (NTSC) | | |
| Video Outputs | BNC 2-channel (1Vp-p, 75Ω) | | BNC 1-channel |
| S-Video | 1-channel | | |
| VGA Output | Resolution : 800 x 600 to 1280 x 1024 | Optional | Nil |
| Matrix Outputs | 4-channel BNC-Alarmed camera switching, keyboard controllable, and sequence with OSD | Nil | Nil |
| Multiplexer | Sequence (programmable) / Digital Zoom 2X / Freeze | | |
| Split display | 4, 8, 9, 13, 16 split display | | |
| Alarm | 16 alarm inputs / 2alarm (NO/NC) outputs | | |
| Motion Detection | 16 x 12 motion grid, 5 sensitivity levels, each channel programmable | | |
| Event Log | External DIO / Video Loss / Stop Rec / Power failure detection / Motion / Schedule | | |
| Accessories | IR Remote Controller (255 DVRs addressable) | | |
| P/T/Z Control | Built-in Merit Lilin & Pelco D protocols / Remote controller / Web controllable | | |
| Keyboard Control | Up to 255 DVRs controllable by PIH-931 keyboard | | Nil |
| RS-485 | Two RJ-45 connectors for RS-485 with 12V output, one RS-485 for PTZ | | RS-485 for PTZ |
| Jog & Shuttle | Setup & playback menu controllable | | |
| Audio | 4-channel RCA inputs / 1-channel output and record (2.2Vp-p, 300Hz to 3KHz) | | |
| Network | HTTP Web-based / NetworkViewer Application / Multiple User Accessible | | |
| Protocol | HTTP port number adjustable / SMTP Alarm Notification | | |
| Web Features | Live monitoring / remote time and event playback / AVI archiving | | |
| DVR status | HTML DVR statistics | | |
| Others | Authentication : Two levels | | |
| WDT | Extra software Watch Dog Timer protection | | |
| Time Sync. | DVRs Timer synchronization by PIH-931 keyboard | | Nil |
| Language OSD | Chinese, English, Spanish, Italian, Japanese, French, Germany, Polish | | |
| CPU | 32-bit RISC Processor, 208MHz | | |
| OS | Linux Kernel 2.6 | | |
| Consumption | AC 90V~260V Max., 135W | | |
| Operation | Temp: -10°C ~ +60°C / Humidity: 0%~80% | | |
| Dimension | 434 x 414 x 88 mm (2U) | | |
| Weight | 8.5Kg (HDD not included) | | 8Kg (HDD not included) |