

A close-up, low-angle shot of a white LILIN dome camera. The camera is cylindrical with a dark, reflective dome lens at the bottom. The LILIN logo is printed on the side of the camera body. The background is a soft, out-of-focus light blue. A horizontal white line is positioned below the camera, separating it from the title text.

LILIN

Fast Dome Camera



PIH-7622 + DH + N (P) + L (F)

7522
7635
7535

DH: Sony 1/4" EXview HAD

N: NTSC / P: PAL

L: AC 24V ±10%
F: AC 100V ~240V ±10%

PIH-7625 + D (DW) (T) + N (P) + L (F) + IP

D:
DW:
T:

D: DIGITAL ZOOM
DW: WIDE DYNAMIC RANGE
T: TRACKING

N: NTSC / P: PAL

IP: IP function

L: AC 24V ±10%
F: AC 100V ~240V ±10%

PRODUCT SELECTION GUIDE

		Indoor Outdoor	Zoom	Sony CCD	TVL	Min Illumination	IR Cut Filter	Page
	PIH-7522NL	Outdoor	22X	1/4" Super HAD	520 (Color)	0.3 Lux (Color)	NA	P.5
	PIH-7522NF							
	PIH-7522PL							
	PIH-7522PF							
	PIH-7522DHNL							
	PIH-7522DHNF							
	PIH-7522DHPL							
	PIH-7522DHPF		35X	1/4" EXview HAD	520 (Color)	0.1 Lux (Color)	YES	P.5
	PIH-7535DHNL							
	PIH-7535DHNF							
	PIH-7535DHPL							
	PIH-7535DHPF							
PIH-7535DHPF								
PIH-7535DHPF	35X	1/4" EXview HAD	580 (Mono)	0.01 Lux (Mono)	YES	P.6		
PIH-7535DHNL								
PIH-7535DHNF								
PIH-7535DHPL								
PIH-7535DHPF								
PIH-7535DHPF								
	PIH-7622NL	Indoor	22X	1/4" Super HAD	520 (Color)	0.3 Lux (Color)	NA	P.7
	PIH-7622NF							
	PIH-7622PL							
	PIH-7622PF							
	PIH-7622DHNL							
	PIH-7622DHNF							
	PIH-7622DHPL							
	PIH-7622DHPF		35X	1/4" EXview HAD	520 (Color)	0.1 Lux (Color)	YES	P.7
	PIH-7635DHNL							
	PIH-7635DHNF							
	PIH-7635DHPL							
	PIH-7635DHPF							
PIH-7635DHPF								
PIH-7635DHPF	35X	1/4" EXview HAD	580 (Mono)	0.01 Lux (Mono)	YES	P.8		
PIH-7635DHNL								
PIH-7635DHNF								
PIH-7635DHPL								
PIH-7635DHPF								
PIH-7635DHPF								
		Special Feature	Zoom	Sony CCD	TVL	Min Illumination	IR Cut Filter	Page
	PIH-7625NL	Basic	25X	1/4" EXview HAD	480 (Color)	0.1 Lux (Color)	YES	P.13
	PIH-7625NF							
	PIH-7625PL							
	PIH-7625PF							
	PIH-7625DNL	Digital Zoom						P.12
	PIH-7625DNF							
	PIH-7625DPL							
	PIH-7625DPF							
	PIH-7625DWNL	WDR						P.12
	PIH-7625DWNF							
	PIH-7625DWPL							
	PIH-7625DWPF							
	PIH-7625TNL	Tracking						P.13
	PIH-7625TNF							
	PIH-7625TPL							
	PIH-7625TPF							
	PIH-7625NLIP	IP						P.13
	PIH-7625NFIP							
PIH-7625PLIP								
PIH-7625PFIP								



22X/35X

Super High Resolution Fast Dome Camera

The Super High Resolution Fast Dome features a fully functional pan and tilt camera with 256 configurations and a choice of either a 22x or 35x optical zoom lens. The Camera incorporates an IR Cut Filter mechanism (optional), automatically switching between color during the day and mono at night, and 8 privacy masking zones, ensuring the latest data protection and security requirements are met. With added features such as the option to programme settings and functions on screen using the five language On Screen Display menu, LILIN's Super High Resolution Fast Dome Camera provides a powerful solution for your security.

PIH-7522/7535 Series Outdoor Super High Resolution Fast Dome Camera

The PIH-7522/7535 Series incorporates a super high resolution color camera with a fully functional housing, offering both time and cost savings. Combined with the optional outdoor brackets, the PIH-7522/7535 Series has been manufactured to meet the needs of all users in outdoor environments.

Low Light Illumination

0.1 Lux /F1.6 (Color)
0.01 Lux /F1.6 (Mono)

Optical Zoom

Choice of either 22X or 35X Optical Zoom
• 22X Optical Zoom Lens, f3.9~85.8mm
• 35X Optical Zoom Lens, f3.6~126mm

Resolution

520TVL (Color), 580TVL(Mono)

IR Cut Filter (Optional)

24hr Surveillance

Additional Features

5-Language OSD Menu
8 Privacy Masking Zones
128 Preset Positions
256 PTZ Configurations
Patrol Learning
Password Lock

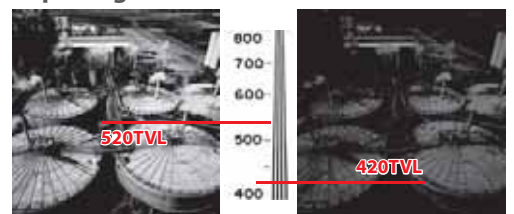
5 Language OSD



Day & Night



Super High Resolution of 520 TVL



22X Optical Zoom Lens

35X Optical Zoom Len



Dynamic Privacy Masking

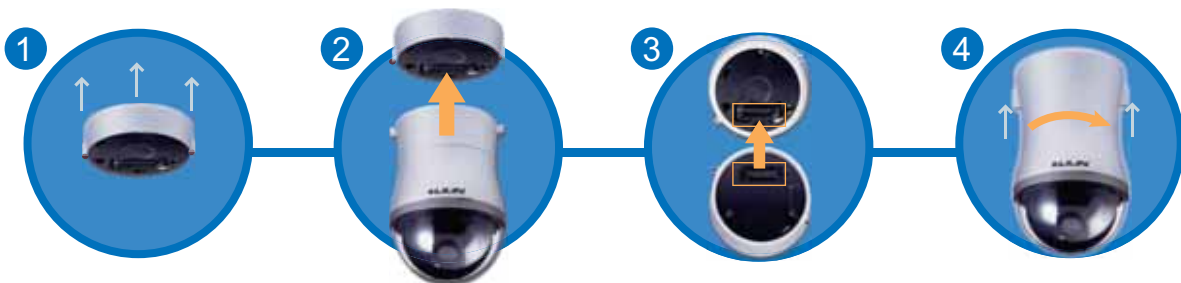


PIH-7622/7635 Series Super High Resolution Fast Dome Camera

The superb functionality of the PIH-7622/7635 Series is enhanced by its simple, elegant design. Sensitivity is increased way above standard fast dome cameras meaning this new product provides the ideal solution for all your surveillance requirements



Easy Installation



22X Outdoor Super Hi-Resolution (Day & Night) Fast Dome Camera Series

Model	PIH-7522NL PIH-7522NF	PIH-7522DHNL PIH-7522DHNF	PIH-7522PL PIH-7522PF	PIH-7522DHPL PIH-7522DHPF
General				
System	NTSC		PAL	
Power Supply	L type : AC 24V ± 10% / F type : AC 100V~240V ± 10%			
Power Consumption	22W			
Image Pick-up Device	Sony 1/4" Super HAD CCD	Sony 1/4" EXview HAD CCD	Sony 1/4" Super HAD CCD	Sony 1/4" EXview HAD CCD
Effective Pixels	768 (H) x 494 (V)		752 (H) x 582 (V)	
Scanning System	2:1 Interlace , 525 Lines , 60 Fields / sec		2:1 Interlace , 625 Lines , 50 Fields / sec	
Scanning Frequency	15.734 KHz (H) , 60 Hz (V)		15.625 KHz (H) , 50 Hz (V)	
Synchronization	Internal / Line Lock Selectable			
Video Output	CVBS 1.0 Vp-p / 75Ω BNC			
Horizontal Resolution	Color : 520 Lines	Color : 520 Lines Mono : 580 Lines	Color : 520 Lines	Color : 520 Lines Mono : 580 Lines
Signal to Noise Ratio	More Than 50 dB (AGC : Off)			
Minimum Illumination	Color : 0.3 Lux at F1.6	Color : 0.1 Lux at F1.6 Mono : 0.01 Lux at F1.6	Color : 0.3 Lux at F1.6	Color : 0.1 Lux at F1.6 Mono : 0.01 Lux at F1.6
IP Rating	IP 66			
Ambient Operation Temperature	- 10°C ~ + 50°C (14°F ~ 122°F)			
Operating Humidity	0% ~ 90%			
Dimensions	326 mm (H) x 210 mm (D)			
Weight	3.2Kg			
Heater Activation	On : 15°C, Off : 25°C			
Fan Activation	On : 35°C, Off : 25°C			
Pan & Tilt				
Panning Range	360° Continuous			
Panning Mode	Manual, Auto, Manual Position, Sequential Position			
Panning Speed	Manual Approx. 0.15°/s ~ 120°/s 8 Steps / Preset Approx. 1°/s ~ 255°/s, Alarm Trigger Speed 360°/s			
Tilting Range	- 6° ~ +96°			
Tilting Mode	Manual, Auto, Manual Position, Sequential Position			
Tilting Speed	Manual Approx. 0.15°/s ~ 120°/s 8 Steps / Preset Approx. 1°/s ~ 255°/s, Alarm Trigger Speed 360°/s			
Lens				
Zoom Ratio	22X Optical Zoom			
Focal Length	3.9 mm ~ 85.8 mm			
Minimum Aperture Ratio	1 : 1.6 (Wide) ~ 3.7 (Tele)			
Minimum Object Distance	1 mm (Tele)			
Iris Range	F1.6 ~ 16, Close			
Angle Field of View	Wide : 38.73° (V) 50.13° (H) / Tele : 1.8° (V) 2.4° (H)			
Main Function				
Control Interface	RS-485 Transmission			
Control Function	Pan and Tilt / Zoom and Focus / Iris and ICR / 128 Preset Position / Home Position / Patrol			
Character Display	On / Off (Preset ID : 16 Alphanumeric Characters , Zoom Ratio , Alarm Message , Date / Time , Pan / Tilt Angle)			
Zoom Speed	0 ~ 7 Selectable [7 : Approx. 3.8 Second (Tele to Wide) in Manual Mode]			
Zoom Limit	Minimum : 1x ~ 10x Selectable , Maximum : 15x ~ 22x Selectable			
Focus Speed	Slow / MID. / Fast Selectable [Fast : Approx. 3.8 Second (Far to Near) in Manual Mode]			
Auto Focus	Auto / Zoom Trigger / Interval			
Iris	ALC (Adjustable Output Target Level) / Manual			
IR Cut filter	NA	YES	NA	YES
Password Lock	Function Setup			
Electric Shutter Speed	Auto / Manual Selectable (1/60 ~ 1/100,000 sec)		Auto / Manual Selectable (1/50 ~ 1/100,000 sec)	
Back Light Compensation	On / Off Selectable			
White Balance	ATW / PUSH / MWB Selectable			
Auto Gain Control	0 ~ 36 dB Selectable			
Auto Mode	OFF / AUTO / SEQ / TOUR / PATROL (STOP / PLAY / LEARN)			
Privacy Zone	On / Off Selectable (Up to 8 Zones Settings)			
Image Mirror	On / Off Selectable			
Image Negative	On / Off Selectable			
Alarm Input / Output	6 Input [Alarm In 1 ~ 6 (NC / NO)] , 1 Output (Alarm Out NC / NO)			
Schedule Setting	Alarm Input / Auto Mode / Daylight Saving Time			

Design and specifications are subject to change without notice.

35X Outdoor Super Hi-Resolution (Day & Night) Fast Dome Camera Series

Model	PIH-7535DHNL	PIH-7535DHNF	PIH-7535DHPL	PIH-7535DHPF
General				
System	NTSC		PAL	
Power Supply	L type : AC 24V ± 10% / F type : AC 100V~240V ± 10%			
Power Consumption	22W			
Image Pick-up Device	Sony 1/4" EXview HAD CCD			
Effective Pixels	768 (H) x 494 (V)		752 (H) x 582 (V)	
Scanning System	2:1 Interlace , 525 Lines , 60 Fields / sec		2:1 Interlace , 625 Lines , 50 Fields / sec	
Scanning Frequency	15.734 KHz (H) , 60 Hz (V)		15.625 KHz (H) , 50 Hz (V)	
Synchronization	Internal / Line Lock Selectable			
Video Output	CVBS 1.0 Vp-p / 75Ω BNC			
Horizontal Resolution	Color : 520 TV Lines , Mono : 580 TV Lines			
Signal to Noise Ratio	More Than 50 dB (AGC : Off)			
Minimum Illumination	Color : 0.1 Lux at F1.6, Mono : 0.01 Lux at F1.6			
IP Rating	IP 66			
Ambient Operation Temperature	- 10°C ~ + 50°C (14°F ~ 122°F)			
Operating Humidity	0% ~ 90%			
Dimensions	326 mm (H) x 210 mm (D)			
Weight	3.2 Kg			
Heater Activation	On : 15°C , Off : 25°C			
Fan Activation	On : 35°C , Off : 25°C			
Pan & Tilt				
Panning Range	360° Continuous			
Panning Mode	Manual , Auto , Manual Position , Sequential Position			
Panning Speed	Manual Approx. 0.15°/s ~ 120°/s 8 Steps / Preset Approx. 1°/s ~ 255°/s, Alarm Trigger Speed 360°/s			
Tilting Range	- 6° ~ + 96°			
Tilting Mode	Manual , Auto , Manual Position , Sequential Position			
Tilting Speed	Manual Approx. 0.15°/s ~ 120°/s 8 Steps/ Preset Approx. 1°/s ~ 255°/s, Alarm Trigger Speed 360°/s			
Lens				
Zoom Ratio	35X Optical Zoom			
Focal Length	3.6 mm ~ 126 mm			
Minimum Aperture Ratio	1 : 1.6 (Wide) ~ 4.2 (Tele)			
Minimum Object Distance	1.5 mm (Tele)			
Iris Range	F1.6 ~ 16 , Close			
Angle Field of View	Wide : 41.6° (V) 53.8° (H) / Tele : 1.23° (V) 1.64° (H)			
Main Function				
Control Interface	RS-485 Transmission			
Control Function	Pan and Tilt / Zoom and Focus / Iris and ICR / 128 Preset Position / Home Position / Patrol			
Character Display	On / Off (Preset ID : 16 Alphanumeric Characters , Zoom Ratio , Alarm Message , Date / Time , Pan / Tilt Angle)			
Zoom Speed	0 ~ 7 Selectable [7 : Approx. 6.8 Second (Tele to Wide) in Manual Mode]			
Zoom Limit	Minimum : 1x ~ 10x Selectable , Maximum : 18x ~ 35x Selectable			
Focus Speed	Slow / MID. / Fast Selectable [Fast : Approx. 3.8 Second (Far to Near) in Manual Mode]			
Auto Focus	Auto / Zoom Trigger / Interval			
Iris	ALC (Adjustable Output Target Level) / Manual			
IR Cut Filter	YES			
Password Lock	Function Setup			
Electric Shutter Speed	Auto / Manual Selectable (1/60 ~ 1/100,000 sec)		Auto / Manual Selectable (1/50 ~ 1/100,000 sec)	
Back Light Compensation	On / Off Selectable			
White Balance	ATW / PUSH / MWB Selectable			
Auto Gain Control	0 ~ 36 dB Selectable			
Auto Mode	OFF / AUTO / SEQ / TOUR / PATROL (STOP / PLAY / LEARN)			
Privacy Zone	On / Off Selectable (Up to 8 Zones Settings)			
Image Mirror	On / Off Selectable			
Image Negative	On / Off Selectable			
Alarm Input / Output	6 Input [Alarm In 1 ~ 6 (NC / NO)] , 1 Output (Alarm Out NC / NO)			
Schedule Setting	Alarm Input / Auto Mode / Daylight Saving Time			

Design and specifications are subject to change without notice.

22X Super Hi-Resolution (Day & Night) Fast Dome Camera Series

Model	PIH-7622NL PIH-7622NF	PIH-7622DHNL PIH-7622DHNF	PIH-7622PL PIH-7622PF	PIH-7622DHPL PIH-7622DHPL
General				
System	NTSC		PAL	
Power Supply	L type : AC 24V ± 10% / F type : AC 100V~240V ± 10%			
Power Consumption	13W			
Image Pick-up Device	Sony 1/4" Super HAD CCD	Sony 1/4" EXview HAD CCD	Sony 1/4" Super HAD CCD	Sony 1/4" EXview HAD CCD
Effective Pixels	768 (H) x 494 (V)		752 (H) x 582 (V)	
Scanning System	2:1 Interlace , 525 Lines , 60 Fields / sec		2:1 Interlace , 625 Lines , 50 Fields / sec	
Scanning Frequency	15.734 KHz (H) , 60 Hz (V)		15.625 KHz (H) , 50 Hz (V)	
Synchronization	Internal / Line Lock Selectable			
Video Output	CVBS 1.0 Vp-p / 75Ω BNC			
Horizontal Resolution	Color : 520 Lines	Color : 520 Lines Mono : 580 Lines	Color : 520 Lines	Color : 520 Lines Mono : 580 Lines
Signal to Noise Ratio	More Than 50 dB (AGC : Off)			
Minimum Illumination	Color : 0.3 Lux at F1.6	Color : 0.1 Lux at F1.6 Mono : 0.01 Lux at F1.6	Color : 0.3 Lux at F1.6	Color : 0.1 Lux at F1.6 Mono : 0.01 Lux at F1.6
Ambient Operation Temperature	- 10°C ~ + 50°C (14°F ~ 122°F)			
Operating Humidity	0% ~ 90%			
Dimensions	238 mm (H) x 145 mm (D)			
Weight	2.3Kg			
Pan & Tilt				
Panning Range	360° Continuous			
Panning Mode	Manual, Auto, Manual Position, Sequential Position			
Panning Speed	Manual Approx. 0.15°/s ~ 120°/s 8 Steps / Preset Approx. 1°/s ~ 255°/s, Alarm Trigger Speed 360°/s			
Tilting Range	- 6° ~ +96°			
Tilting Mode	Manual, Auto, Manual Position, Sequential Position			
Tilting Speed	Manual Approx. 0.15°/s ~ 120°/s 8 Steps / Preset Approx. 1°/s ~ 255°/s, Alarm Trigger Speed 360°/s			
Lens				
Zoom Ratio	22X Optical Zoom			
Focal Length	3.9 mm ~ 85.8 mm			
Minimum Aperture Ratio	1 : 1.6 (Wide) ~ 3.7 (Tele)			
Minimum Object Distance	1 mm (Tele)			
Iris Range	F1.6 ~ 16, Close			
Angle Field of View	Wide : 38.73° (V) 50.13° (H) / Tele : 1.8° (V) 2.4° (H)			
Main Function				
Control Interface	RS-485 Transmission			
Control Function	Pan and Tilt / Zoom and Focus / Iris and ICR / 128 Preset Position / Home Position / Patrol			
Character Display	On / Off (Preset ID : 16 Alphanumeric Characters , Zoom Ratio , Alarm Message , Date / Time , Pan / Tilt Angle)			
Zoom Speed	0 ~ 7 Selectable [7 : Approx. 3.8 Second (Tele to Wide) in Manual Mode]			
Zoom Limit	Minimum : 1x ~ 10x Selectable , Maximum : 15x ~ 22x Selectable			
Focus Speed	Slow / MID. / Fast Selectable [Fast : Approx. 3.8 Second (Far to Near) in Manual Mode]			
Auto Focus	Auto / Zoom Trigger / Interval			
Iris	ALC / Manual			
IR Cut filter	NA	YES	NA	YES
Password Lock	Function Setup			
Electric Shutter Speed	Auto / Manual Selectable (1/60 ~ 1/100,000 sec)		Auto / Manual Selectable (1/50 ~ 1/100,000 sec)	
Back Light Compensation	On / Off Selectable			
White Balance	ATW / PUSH / MWB Selectable			
Auto Gain Control	0 ~ 36 dB Selectable			
Auto Mode	OFF / AUTO / SEQ / TOUR / PATROL (STOP / PLAY / LEARN)			
Privacy Zone	On / Off Selectable (Up to 8 Zones Settings)			
Image Mirror	On / Off Selectable			
Image Negative	On / Off Selectable			
Alarm Input / Output	6 Input [Alarm In 1 ~ 6 (NC / NO)] , 1 Output (Alarm Out NC / NO)			
Schedule Setting	Alarm Input / Auto Mode / Daylight Saving Time			

Design and specifications are subject to change without notice.

35X Super High Resolution Day & Night Fast Dome Camera Series

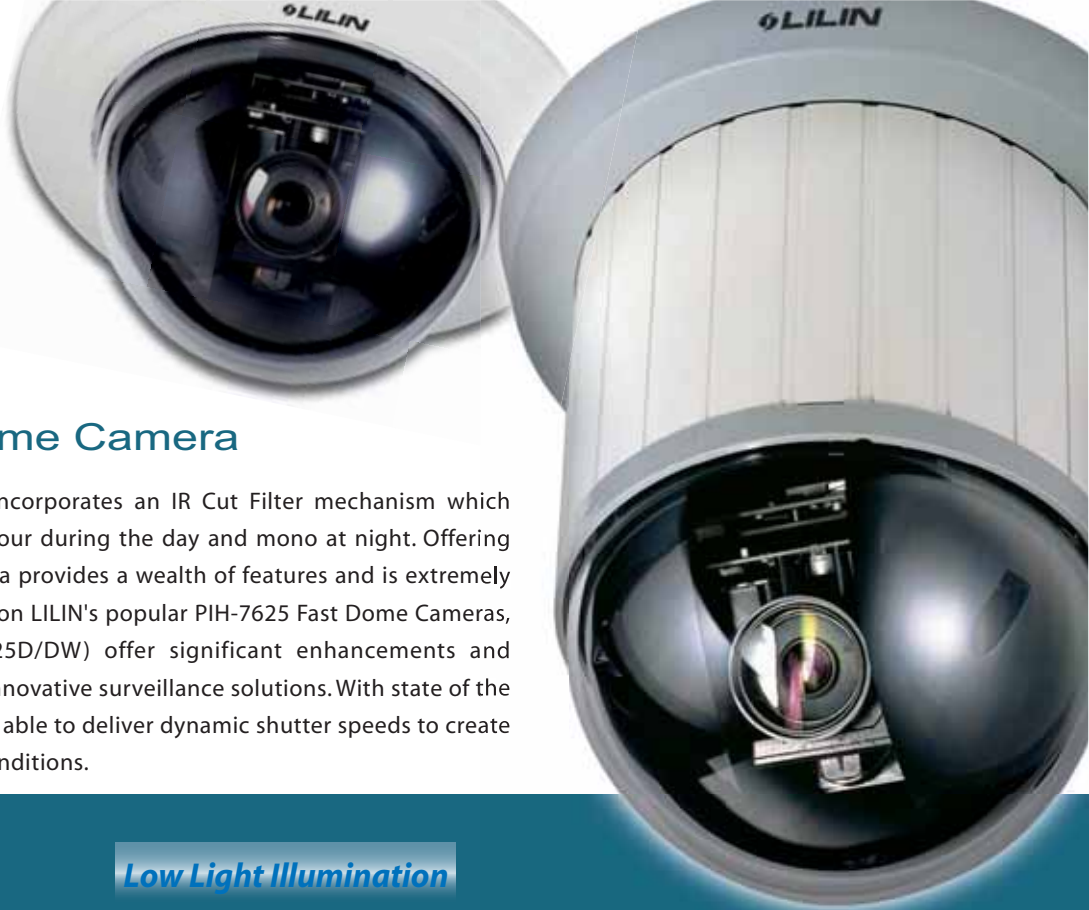
Model	PIH-7635DHNL	PIH-7635DHNF	PIH-7635DHPL	PIH-7635DHPF
General				
System	NTSC		PAL	
Power Supply	L type : AC 24V ± 10% / F type : AC 100V~240V ± 10%			
Power Consumption	13W			
Image Pick-up Device	Sony 1/4" EXview HAD CCD			
Effective Pixels	768 (H) x 494 (V)		752 (H) x 582 (V)	
Scanning System	2:1 Interlace , 525 Lines , 60 Fields / sec		2:1 Interlace , 625 Lines , 50 Fields / sec	
Scanning Frequency	15.734 KHz (H) , 60 Hz (V)		15.625 KHz (H) , 50 Hz (V)	
Synchronization	Internal / Line Lock Selectable			
Video Output	CVBS 1.0 Vp-p / 75Ω BNC			
Horizontal Resolution	Color : 520 TV Lines , Mono : 580 TV Lines			
Signal to Noise Ratio	More Than 50 dB (AGC : Off)			
Minimum Illumination	Color : 0.1 Lux at F1.6, Mono : 0.01 Lux at F1.6			
Ambient Operation Temperature	- 10°C ~ + 50°C (14°F ~ 122°F)			
Operating Humidity	0% ~ 90%			
Dimensions	238 mm (H) x 145 mm (D)			
Weight	2.3 Kg			
Pan & Tilt				
Panning Range	360° Continuous			
Panning Mode	Manual , Auto , Manual Position , Sequential Position			
Panning Speed	Manual Approx. 0.15°/s ~ 120°/s 8 Steps / Preset Approx. 1°/s ~ 255°/s, Alarm Trigger Speed 360°/s			
Tilting Range	- 6° ~ + 96°			
Tilting Mode	Manual , Auto , Manual Position , Sequential Position			
Tilting Speed	Manual Approx. 0.15°/s ~ 120°/s 8 Steps/ Preset Approx. 1°/s ~ 255°/s, Alarm Trigger Speed 360°/s			
Lens				
Zoom Ratio	35X Optical Zoom			
Focal Length	3.6 mm ~ 126 mm			
Minimum Aperture Ratio	1 : 1.6 (Wide) ~ 4.2 (Tele)			
Minimum Object Distance	1.5 mm (Tele)			
Iris Range	F1.6 ~ 16 , Close			
Angle Field of View	Wide : 41.6° (V) 53.8° (H) / Tele : 1.23° (V) 1.64° (H)			
Main Function				
Control Interface	RS-485 Transmission			
Control Function	Pan and Tilt / Zoom and Focus / Iris and ICR / 128 Preset Position / Home Position / Patrol			
Character Display	On / Off (Preset ID : 16 Alphanumeric Characters , Zoom Ratio , Alarm Message , Date / Time , Pan / Tilt Angle)			
Zoom Speed	0 ~ 7 Selectable [7 : Approx. 6.8 Second (Tele to Wide) in Manual Mode]			
Zoom Limit	Minimum : 1x ~ 10x Selectable , Maximum : 18x ~ 35x Selectable			
Focus Speed	Slow / MID. / Fast Selectable [Fast : Approx. 3.8 Second (Far to Near) in Manual Mode]			
Auto Focus	Auto / Zoom Trigger / Interval			
Iris	ALC (Adjustable Output Target Level) / Manual			
IR Cut Filter	YES			
Password Lock	Function Setup			
Electric Shutter Speed	Auto / Manual Selectable (1/60 ~ 1/100,000 sec)		Auto / Manual Selectable (1/50 ~ 1/100,000 sec)	
Back Light Compensation	On / Off Selectable			
White Balance	ATW / PUSH / MWB Selectable			
Auto Gain Control	0 ~ 36 dB Selectable			
Auto Mode	OFF / AUTO / SEQ / TOUR / PATROL (STOP / PLAY / LEARN)			
Privacy Zone	On / Off Selectable (Up to 8 Zones Settings)			
Image Mirror	On / Off Selectable			
Image Negative	On / Off Selectable			
Alarm Input / Output	6 Input [Alarm In 1 ~ 6 (NC / NO)] , 1 Output (Alarm Out NC / NO)			
Schedule Setting	Alarm Input / Auto Mode / Daylight Saving Time			

Design and specifications are subject to change without notice.

25X

Day/Night Fast Dome Camera

The PIH-7625 Fast Dome Camera incorporates an IR Cut Filter mechanism which automatically switches between colour during the day and mono at night. Offering unrivalled picture quality, the camera provides a wealth of features and is extremely simple to install and operate. Based on LILIN's popular PIH-7625 Fast Dome Cameras, the wide dynamic range (PIH-7625D/DW) offer significant enhancements and refinements to bring you the most innovative surveillance solutions. With state of the art technology the PIH-7625D/DW is able to deliver dynamic shutter speeds to create a sharp color image in all lighting conditions.



Optical Zoom

25X Optical Zoom Lens
F3.8~95mm

Low Light Illumination

0.1 Lux /F1.6 (Color)
0.01 Lux /F1.6 (Mono)

Resolution

480TVL (Color)
520TVL (Mono)

IR Cut Filter

24hr Surveillance

Additional Features

OSD / 128 Preset ID

IP Function (7625IP)

Remote monitoring of live video and full PTZ control via web browsers

Wide Dynamic Range (7625DW)

400:1 Enhanced WDR

Memory Function (7625D/DW)

180° Flip
Top/Botton Reverse
Left/Right Reverse

Auto Tracking (7625T)

Manage the motion tracking function with a single camera

Dynamic Privacy Masking (7625D/DW)

8 Privacy Masking Zones

On Screen Display



Day & Night



25X Optical Zoom Lens

PIH-7625 DW Wide Dynamic Range Fast Dome Camera

Wide Dynamic Range Technology uses two shutter speeds in alternative video fields and combines two fields into one progressive scan frame. As a result, the combined field provides a high quality image.



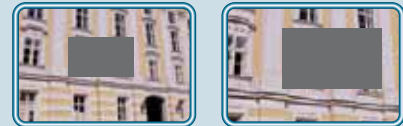
Memory Function

1. 180° Flip
2. Top/Bottom Reverse
3. Left/Right Reverse



Dynamic Privacy Masking

With advanced Privacy Zone Masking function, unwanted or prohibited areas within an image can be masked appropriately. Up to 8 privacy zones can be setup in one scene.



Slow-speed Shutter

The slow speed shutter offers an optimal brightness level by increasing the number of stored fields of the CCD in response to low light conditions.



PIH-7625T Human Tracking System Fast Dome Camera

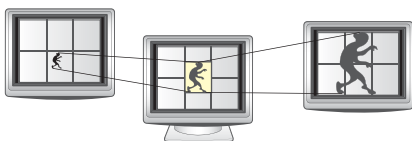
With all the features and functionality of the LILIN PIH-7625 Day/Night Fast Dome Camera, the new PIH-7625T has a built-in intelligent video processing chip to improve accuracy and eliminate false action occurrence. Different from other cameras, our new technology allows us to manage the motion tracking function with a single camera. The system will auto zoom and monitor the object on the screen.

Applications

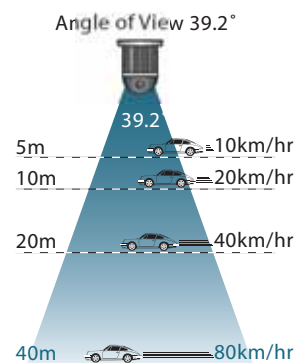
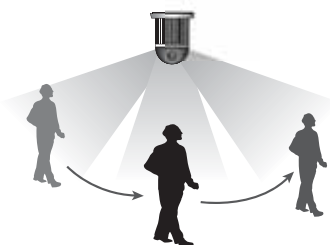
- Access control area (Bank Chest, Military Magazine, Oil or Chemical tank...)
- After hour monitoring and surveillance area (Warehouse, Archives, Parking exit...)
- Education Institution or Video Conference.
- Ceremony



Auto zoom and monitor the object on the screen



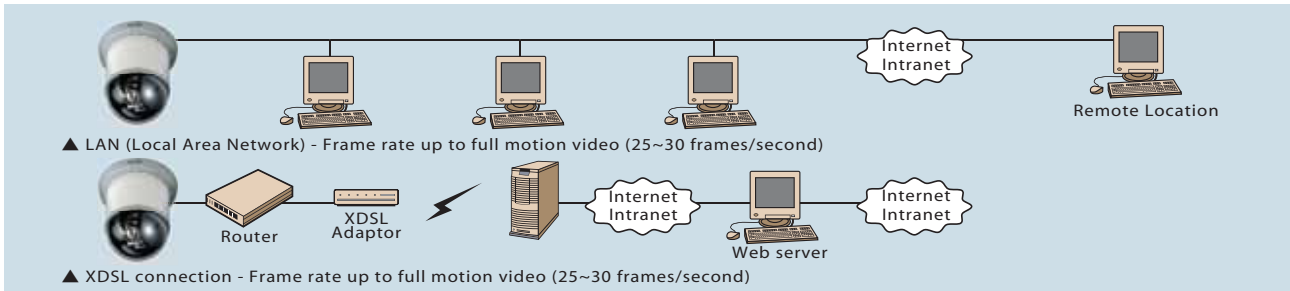
Auto tracking



The limitation of tracking object moving speed

LILIN IP Fast Dome PIH-7625IP is a combination of Fast Dome Camera and integrated web server, making it an ideal choice for remote surveillance applications. Features include remote monitoring of live video and full PTZ control via web browsers, alarm and motion detection function triggered for images transmitted via e-mail or FTP providing flexible alarm management.

IP Fast Dome Connections



NVR - Network Video Monitoring and Recording Software (Optional)

- Provide up to 36 channels of live monitoring, recording, and playback
- E-Map central management system for managing devices and alarm events
- IP Fast Dome PTZ control
- Hybrid video management system for both IP Fast Dome and DVR products
- User authentication
- Quick time stamp search for video playback
- AVI & JPEG file exporting Option
- Drag-n-drop for camera arrangement



Additional IP Features

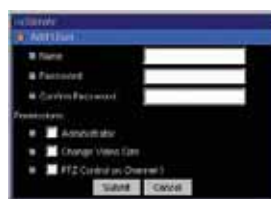
- Live video monitoring via HTML with throughput up to 30 frames/second
- Easy to use PTZ user interface
- Customized event script
- Images FTP and email provided
- Motion detection to record only when movement occurs
- Easy IP setup via ARP/Web page/IP installer
- API supported



IE VIEWER



Motion Detection



Security



Video Quality Adjustment



P/T/Z Adjustment

25X Day & Night Fast Dome Camera Series

Model	PIH-7625DNL PIH-7625DNF	PIH-7625DWNL PIH-7625DWNF	PIH-7625DPL PIH-7625DPF	PIH-7625DWPL PIH-7625DWPF
General				
System	NTSC		PAL	
Power Supply	L type : AC 24V ± 10% / F type : AC 100V~240V max.			
Power Consumption	13W			
Image Pick-up Device	Sony 1/4" EXview HAD CCD			
Effective Pixels	768 (H) x 494 (V)		752 (H) x 582 (V)	
Scanning System	2:1 Interlace, 525 lines, 60 fields/sec		2:1 Interlace, 625 lines, 50 fields/sec	
Horizontal & Vertical Sync.	15.734KHz, 60Hz		15.625KHz, 50Hz	
Synchronization	Internal			
Video Output	CVBS 1.0Vp-p / 75Ω BNC			
Horizontal Resolution	480TVL (Color), 520TVL (Mono)			
S/N Ratio	More than 50dB			
Minimum Illumination	0.1 Lux at F1.6 (Color) / 0.01 Lux at F1.6 (Mono)			
Cable Requirement	UL24AWGx2C Twisted Pair (recommended)			
Operating Temperature	-10°C ~ +50°C			
Operating Humidity	0% ~ 90%			
Dimension (HxD)	208mm (8.3") x 145mm (5.6")			
Weight	2.5Kg			
Pan and Tilt				
Pan Travel	360° Continuous			
Tilt Travel	-5° ~ +95°			
Pan / Tilt Accuracy	0.25°			
Manual Pan / Tilt Speed	1°~180° / Sec			
Preset Pan / Tilt Speed	1°~255° / Sec			
Preset Dwell Time	1~255 Sec			
Lens				
Zoom Ratio	25X Optical Zoom			
Focal Length	3.8mm~95mm			
Aperture (F)	F1.6~F3.7			
Angle Field of View	Wide : 39.2°(V) 51.9°(H); Tele : 1.6°(V) 2.2°(H)			
Main Function I				
Control Interface	RS-485			
Address Setting	64 programmable ID			
Iris Control	Auto / Manual (Fast or Medium Speed)			
White Balance	Auto Correction / Auto Tracking / Indoor or Outdoor/Manual			
BLC	ON (Background Video Level Adjustable) / OFF			
Operation Setting	OSD			
Flickerless	ON / OFF			
Auto Gain Control	8dB (Low), 22dB (Medium), 36dB (High)			
Preset Position	128 preset positions			
Preset Group	4 Group (Corresponding with first 16 presets)			
Alarm Input	6 Inputs (expandable to 64)			
Operation Mode	Normal			
Return Mode	OFF / HOME / SEQ.			
Main Function II				
Wide Dynamic Range	400 : 1 (PIH-7625DW)			
Digital Zoom	256X (PIH-7625D); 2.56X (PIH-7625DW)			
Electronic Shutter	1/60~1/100000 (1/Sec)		1/50~1/100000 (1/Sec)	
Low Speed Shutter	0, 2~20, 40, 80, 160, 320, 510 (FLD)			
Video Focus	Auto/One Shot/Manual, 0.07m (Wide)~1m (Tele)			
Dynamic Privacy Masking	On / Off, Up to 8 Privacy Zone			
Negative-Positive	Y-Inverse (Off / On) C-Inverse (Off / On)			
Image Memory Function	Left / Right Reverse, Top / Bottom Reverse, 180° Image Rotation, Field Image Capture			
Home Position	Preset 1			

Design and specifications are subject to change without notice.

25X Day & Night Fast Dome Camera Series

Model	PIH-7625NL PIH-7625NF	PIH-7625TNL PIH-7625TNF	PIH-7625PL PIH-7625PF	PIH-7625TPL PIH-7625TPF
General				
System	NTSC		PAL	
Power Supply	L type : AC 24V ± 10% / F type : AC 90V~260V max.			
Power Consumption	13W			
Image Pick-up Device	Sony 1/4" ExView HAD CCD			
Effective Pixels	768 (H) x 494 (V)		752 (H) x 582 (V)	
Scanning System	2:1 Interlace, 525 lines, 60 fields/sec		2:1 Interlace, 625 lines, 50 fields/sec	
Horizontal & Vertical Sync.	15.734KHz, 60Hz		15.625KHz, 50Hz	
Synchronization	Internal			
Video Output	CVBS 1.0Vpp / 75Ω BNC			
Horizontal Resolution	480TVL (Color), 520TVL (Mono)			
S/N Ratio	More than 50dB			
Minimum Illumination	0.1 Lux at F1.6 (Color) / 0.01 Lux at F1.6 (Mono)			
Cable Requirement	UL24AWGx2C Twisted Pair (recommended)			
Operating Temperature	-10°C+50°C			
Operating Humidity	0% ~90%			
Dimension (HxD)	208mm (8.3") x145mm (5.6")			
Weight	2.5Kg			
Pan and Tilt				
Pan Travel	360° Continuous			
Tilt Travel	-5° +95°			
Pan / Tilt Accuracy	0.25°			
Manual Pan / Tilt Speed	1°~180° / Sec			
Preset Pan / Tilt Speed	1°~255° / Sec			
Preset Dwell Time	1~255 Sec			
Lens				
Zoom Ratio	25X Optical Zoom			
Focal Length	3.8mm~95mm			
Aperture (F)	F1.6~F3.7			
Angle Field of View	Wide : 39.2° (V) 51.9° (H); Tele : 1.6° (V) 2.2° (H)			
Main Function				
Control Interface	RS-485			
Address Setting	64 programmable ID			
Iris Control	Auto / Manual (Fast or Medium Speed)			
White Balance	Auto Correction / Auto Tracking / Indoor or Outdoor			
BLC	ON (Background Video Level Adjustable) / OFF			
Operation Setting	OSD			
Flickerless	ON / OFF			
Auto Gain Control	8dB (Low), 22dB (Medium), 36dB (High)			
Preset Position	128 preset positions			
Preset Group	4 Group (Corresponding with first 16 presets)			
Alarm Input	6 Inputs (expandable to 64)			
Operation Mode	Normal	Normal/Track	Normal	Normal/Track
Return Mode	OFF/HOME/SEQ.			
Network Function				
PIH-7625NLIP PIH-7625NFIP PIH-7625PLIP PIH-7625PFIP				
CPU	32 Bits RISC Processor			
ROM	2MB Flash ROM			
RAM	16MB SDRAM			
Watch Dog	Chip to monitor out tolerance system voltage and abnormal program executing			
LED	LEDs to indicate network and power and system status			
Video Compression	JPEG; Motion JPEG			
Video Adjustment	Brightness, Contrast, Hue, Saturation, Quality			
Protocols	TCP / UDP / IP / ARP / ICMP / HTTP / FTP / Telnet / SMPT / DHCP / PPP			
Max. Resolution	4 CIF : NTSC (704 x 480) PAL (704 x 576) / CIF : NTSC (352 x 240) PAL (352 x 288)			
Performance	Video throughput: Up to 30 fps			
Event Trigger & Action	Programmable Event Script with Wizard support			
Installation	Assign IP address : using ARP or Via Admin Web Page or IP Installer			
Software Upgrade	Local or Remote upgrade via FTP & Telnet			
System Requirement	Standard browser : IE4.x / 5.x or above / Netscape Navigator 7.x on Win95 / 98/ NT / Linux			
Security	Three-layer Password Protection			

Design and specifications are subject to change without notice.

Housing & Bracket Selection Guide (Optional)



PIH-520L
Wall Mount



PIH-520LB
Wall Mount



PIH-520G
Swan Neck



PIH-520HB
Pendant Mount



PIH-CPM
Corner & Pole Mount



PIH-510CPM
Corner & Pole Mount



PIH-303B
Wall Mount



PIH-303P
Pendant Mount



PIH-76WM
Wall Mount

Indoor Application



PIH-303B
Wall Mount



PIH-303P
Pendant Mount



PIH-303BX

Outdoor Application



PIH-510L
Wall Mount



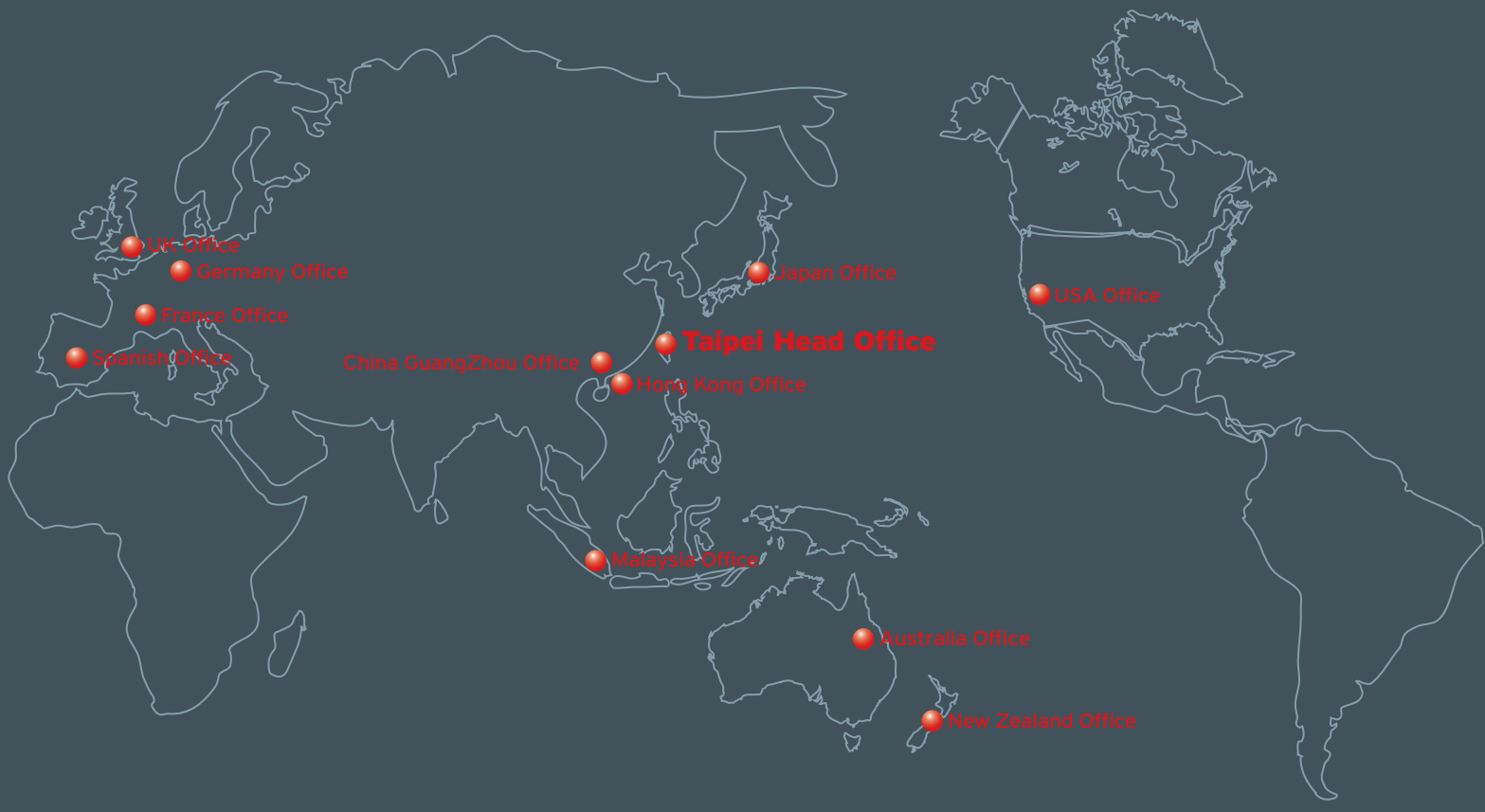
PIH-510G
Swan Neck



PIH-510H
Pendant Mount



PIH-510CPM
Corner & Pole Mount



TAIPEI HEAD OFFICE

MERIT LILIN ENT. CO. LTD.

No.20, Wu-Kong 6 Rd.,
Wu-Ku Industrial Zone Wu-Ku Hsiang,
Taipei Hsien, Taiwan, R.O.C.
TEL: (886-2)2298-8988, 6625-7699
FAX: (886-2)2298-9077, 6625-9866
E-mail: sales@meritlilin.com.tw
www.meritlilin.com

China GuangZhou Office

Merit LILIN CHINA(Guangzhou)
www.gzlilin.com.cn

Hong Kong Office

Merit LILIN CCTV HK LTD.
kenneth@meritlilinhk.com

Japan Office

Merit CORPORATION
www.meritcctv.com

Malaysia Office

Merit LILIN MALAYSIA SDN BHD
www.cslilin.com

USA Office

Merit LILIN (USA) CORP.
www.meritlilin.us

Australia Office

Merit LILIN Pacific PTY LTD.
www.meritlilinpacific.com.au

New Zealand Office

Merit LILIN (NZ) LTD.
www.meritcctv.co.nz

UK Office

Merit LILIN UK LTD.
www.meritlilin.co.uk

France Office

Merit LILIN (EUROPE) SA
www.meritlilin.fr

Germany Office

Merit LILIN Deutschland GmbH
www.merit-lilin.de

Spanish Office

Merit LILIN SPAIN S.L.
www.meritlilinspain.com

Taiwan Hong Kong China France New Zealand USA United Kingdom Australia Malaysia Japan Germany Spain

70-FASTDE0801

LILIN
MERIT LILIN ENT. CO., LTD.
www.meritlilin.com

