

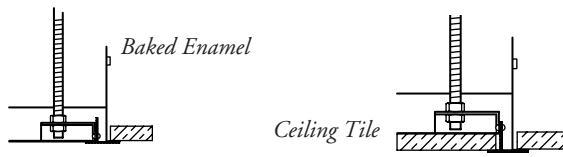
UniMount

The UniMount offers all the function and convenience of the ELECTRAMOUNT—in a smaller, lighter package. Accommodates all the video projectors that fit the ELECTRAMOUNT MODEL S. The UniMount is compact and lightweight, requiring only 19½" headroom above the ceiling. Self-contained for simplified installation. The universal steel ceiling closure may be mounted with a recess to accept ceiling tile or with a smooth surface finished in off-white baked enamel (details below). Lifting capacity is 175 pounds.

System Options

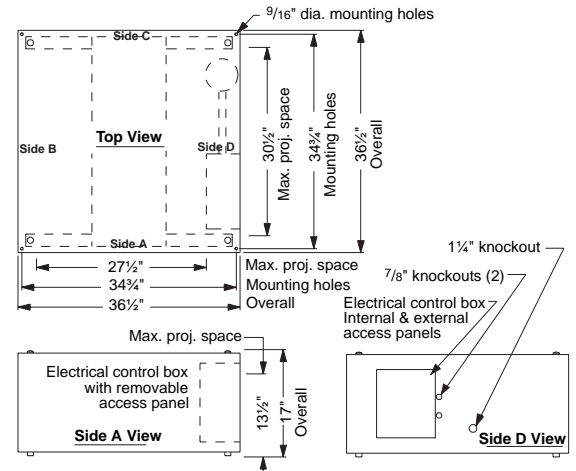
- **Ceiling access door**—A hinged access door in the ceiling is optional for when access to the projector from above the ceiling is not convenient.

ElectraMount & UniMount Closure Details



11132/DRC
BuyLine 3260

U. S. Patent No.
4,750,832



Specifications—LCD Lift

____ LCD LIFTS, Model (A/B), electrically operated 115V AC, 60 Hz., to accept projectors weighing up to 65 lbs. Motor is UL, CSA and CE recognized, instantly reversible, and lifetime lubricated. Unit designed to be ceiling recessed, with aluminum panels formed to serve as both frame and enclosure, suitable for use in return air plenum. Ceiling closure to be sheet metal (doors/closure panel), finished in white baked textured powdercoat. Doors shall be hinged to open “bomb bay style”. Closure panel shall be attached to unit via threaded rods. Projector to be suspended from internal aluminum tray operated by sprocket and ladder system.

Factory set limit switches to automatically stop travel at open and closed positions. One 115V AC 60 Hz. fused duplex outlet, automatically energized in the fully down position, is to be mounted within the unit. Video hookup to be factory installed inside unit. (Option: RGB hookup to be factory installed inside unit.) Unit to be furnished with knockouts for cable passage. AC sensor to delay upward operation until projector’s ventilation system has shut off. Three-position, 115V control switch (Option: 2 or more 24V switches and/or infrared remote transmitter and/or radio frequency remote transmitter) to stop or reverse cycle at any point.

See specification on page 26 for optional Aero Low Profile Lift Bracket.

Specifications—ElectraMount

____ ELECTRAMOUNT MODEL (S/E/K/J/G) video projector lifts, for projectors weighing up to 300 lbs. Electrically operated 115V, 60 Hz. UL recognized gearmotor, lifetime lubricated. Designed to be ceiling recessed, with 1" x 2" x 16 ga. tubular steel frame, fully enclosed by 18 ga. steel panels and suitable for use in return air plenum. Universal ceiling closure, finished in white baked textured powdercoat, shall descend smoothly with projector. Projector to be suspended from 1" x 2" x 16 ga. tubular steel grid supported/operated by four 1" threaded rods for level, even positioning.

Factory set limit switches automatically stop travel at open

and closed positions. One 115V grounded and switched duplex outlet provided within unit, and knockout furnished for cable passage. Three-position, 24V control switch (Option: 2 or more 24V switches and/or wireless remote transmitter) to stop or reverse cycle at any point.

U. S. Patent No. 4,750,832.

Contact DRAPER, INC. for assistance in determining which ELECTRAMOUNT will accommodate your specified video projector.

Specifications—UniMount

____ UNIMOUNT video projector lifts, electrically operated 115V, 60 Hz., to accept projectors weighing up to 175 lbs. Motor UL recognized, instantly reversible, thermally protected, and lifetime lubricated. Unit designed to be ceiling recessed, with 16 ga. panels formed to serve as both frame and enclosure, suitable for use in return air plenum.

Universal ceiling closure of 18 ga. steel finished in baked white textured powdercoat, can be recessed to accept ceiling tile. To descend smoothly with projector to fully open position in approx. 24 seconds. Projector to be suspended from 11 ga. formed steel grid supported and operated by four 1" diameter threaded rods to ensure level, even positioning.

Factory set limit switches to automatically stop travel at open and closed positions. One 115V AC, 60 Hz., fused duplex outlet, automatically energized in the fully down position, is to be mounted within the unit’s electrical box. Unit to be furnished with knockouts for cable passage. Three-position 115V control switch to stop or reverse cycle at any point.

U. S. Patent No. 4,750,832.

Specifications—Scissor Lift and Scissor Lift SLX

____ SCISSOR LIFT video projector lifts, Model (SL4/SL5/SL6/SL7/SL8/SL9/SL10/SLX11/SLX12/SLX13/SLX14/SLX15/SLX16/SLX17), for projectors weighing up to 350 lbs. Dove grey baked powdercoat finish. Projector bolts onto operating pan, or mounts to pan with optional DRAPER AERO LOW PROFILE LIFT BRACKET or manufacturer’s

recommended ceiling mounting bracket (supplied by others). Electrically operated 110-120V AC, 60 Hz. UL recognized gearmotor, with metal chain drive system, to be lifetime lubricated.

Equipped with 3 sets of stabilizing scissors, positioned on the left, right and rear sides. Also equipped with fail-safe inertial safety belt system and CABLE MANAGEMENT SYSTEM with projector power cord.

Factory set limit switches to automatically stop travel at store, show, and service positions. Single Station Control, standard, consists of one 12V toggle switch to lower lift from “stored” to “show” positions, and one 12V momentary key switch to lower lift from “show” to “service” position. Optional Multiple Station Control for operation from “stored” to “show” positions only; required for use with RF and IR wireless remote control, or Key Operated Switch.

Optional plenum housing consists of suitable painted steel panels for use in return air plenum situations. Optional ceiling closure, finished in white baked textured powdercoat, shall descend smoothly with projector.

Choose a model based on number of feet needed (SL4’-10’) (SLX 11’-17’) to put your projector within easy reach for servicing.

Scissor Lift: Projector to be suspended from 2¾" x 20" x 20" x 11 ga. steel pan supported by steel scissor arms and operated by two, ½" aircraft cables with 2000 foot/pounds tensile strength per cable.

Scissor Lift SLX: Projector to be suspended from 3¼" x 24" x 26" x 11 ga. steel pan supported by steel scissor arms and operated by two, ¾" aircraft cables with 4200 foot/lbs. tensile strength per cable.

U. S. Patent No. D395,909.

See specification on page 26 for optional Aero Low Profile Lift Bracket.

Please Note: The LCD LIFT, ELECTRAMOUNT, UNIMOUNT, SCISSOR LIFT and SCISSOR LIFT SLX should be specified in conjunction with a DRAPER, INC. video format motorized screen.