

Ambassador

Electrically Operated Projection Screen with Automatic Ceiling Closure

Designed for boardrooms, conference and meeting rooms



The DRAPER AMBASSADOR is a direct-drive, heavy-duty, electrically operated screen designed specifically for recessed installation above any type of ceiling.

The AMBASSADOR features a fully automatic ceiling closure, which totally conceals the screen when not in use. The ceiling closure can be finished by the contractor to match the ceiling.

Your choice of a conventional viewing surface: fiberglass matt white or glass beaded.

System Options

- **Extra Drop**—Up to 12' overall height, either white or black (white is standard).
- **Black Masking Borders**—optional.
- **Control Options**—Refer to page 5.

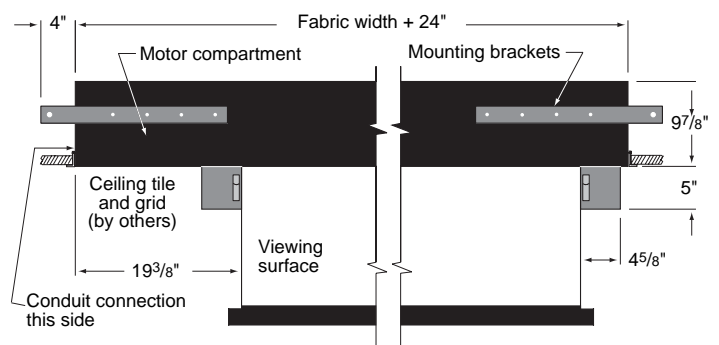
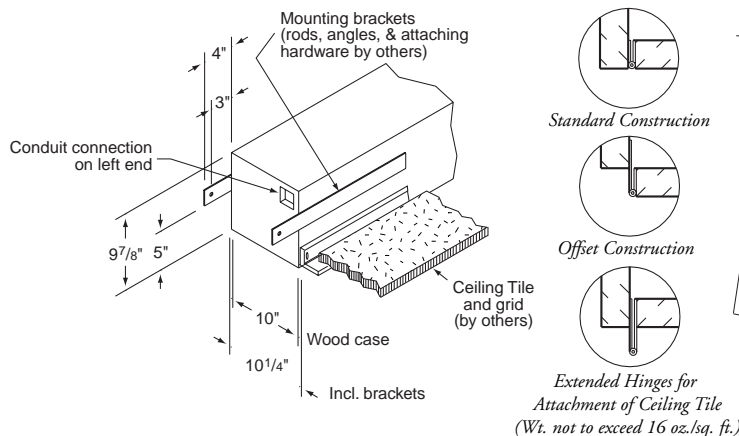


Dimensions & Data—Ambassador

Viewing Surface HxW	Case Length	Net Wt. (lbs.)	Viewing Surface HxW	Case Length	Net Wt. (lbs.)
50" x 50"	6'2"	105	7' x 9'	11'	160
60" x 60"	7'	115	9' x 9'	11'	170
70" x 70"	7'10"	120	8' x 10'	12'	180
84" x 84"	9'	140	10' x 10'	12'	185
6' x 8'	10'	155	9' x 12'	14'	205
8' x 8'	10'	160	12' x 12'	14'	210

Case dimensions—9⁷/₈" high x 10¹/₄" wide
Mounting brackets extend 4" in length beyond ends of case.

Case Dimensions/Method of Installation



Specifications—Ambassador

Projection screens, size ____ h. x ____ w., electrically operated 110-120v. ac, 60 Hz. Motor to be 3-wire, instantly reversible, lifetime lubricated, with thermal overload protector and mechanical brake. Motor mounted on rubber vibration insulators. Preset, accessible limit switches. Entire drive unit easily removed from case. 3-position control switch (or switches-specify number) to stop or reverse screen at any point. Control(s) complete with cover plate. Metal roller, 5" OD. Zinc plated roller brackets with double row radial ball bearings. Viewing surface of (fiberglass matt white/

glass beaded), fire and mildew resistant.

Case of 3/4" warp resistant composition wood, with hinged panel for access to motor compartment, finished with primer coat of paint. Motor compartment metal lined. Bottom of case enclosed by two panels. One panel mounted on a continuous hinge, to open and close automatically when screen operates. Hinge mounted to allow matching of bottom panel to ceiling. Second panel semi-permanently attached to wall of case.

Entire unit certified by Underwriters' Laboratories, Inc. for the U. S. and Canada.